

LS-238H Lift Crane Capacities

PCSA Class 12-769
Refer to notes page 7

Boom — Tube; 62" (1.57 m) wide, 70" (1.78 m) deep with open throat top section and 26' (7.92 m) live mast.

Jib — Tube; 36" (.91 m) wide, 30" (.75m) deep.

Counterweights — Refer to chart below.

Mounting — crawler:
overall length: 23' 10-5/16" (7.27 m)
gauge: 15' 6" (4.72 m)

Counterweights					
"A"		"AB"		"ABC"	
Pounds	Kilograms	Pounds	kilograms	Pounds	Kilograms
23,000	10 433	42,330	19 201	69,000	31 298

Open throat boom or boom + jib machine can **lift off** ground unassisted, without load.

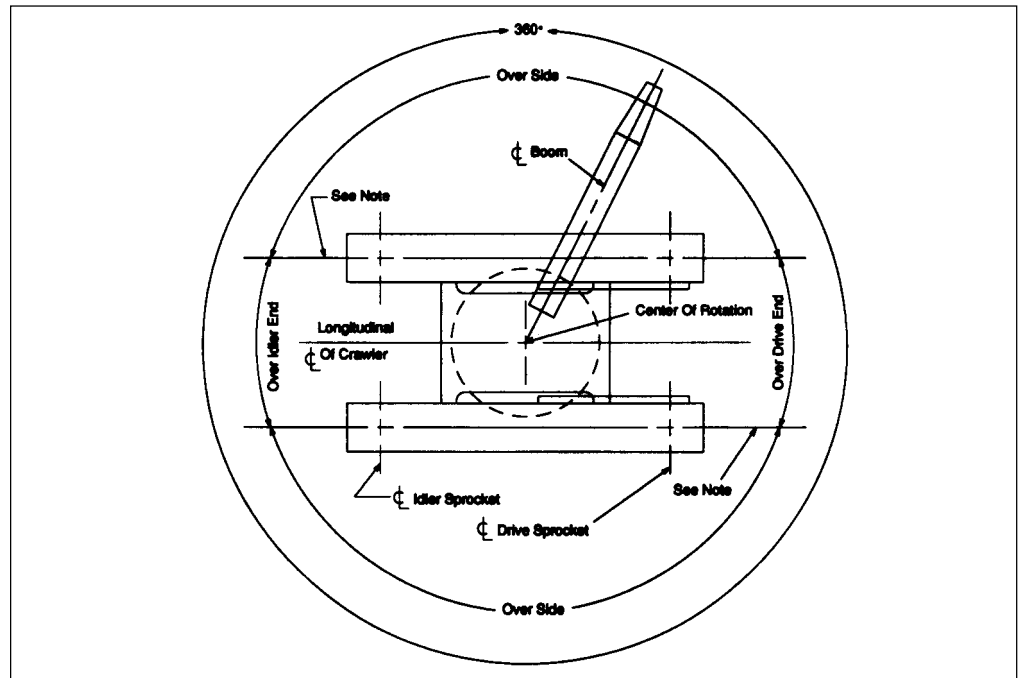
Counterweight		Over End - Blocked				Over Side or Over End Without Blocking			
		Boom		Boom + Jib		Boom		Boom + Jib	
		Feet	meters	Feet	meters	Feet	meters	Feet	meters
No cwt.	Maximum	160	48.77	130 + 60	39.62 + 18.29	130	39.62	110 + 40	33.53 + 12.19
Cwt. "A"	Maximum	190	57.91	170 + 40	51.82 + 12.19	170	51.82	140 + 50	42.67 + 15.24
Cwt. "AB"	Maximum	220	99.79	190 + 50	57.91 + 15.24	190	57.91	170 + 40	51.82 + 12.19
Cwt. "ABC"	Maximum	240	108.86	210 + 70	95.26 + 21.34	230	70.10	190 + 70	57.91 + 21.34

Notes:

- Booms must be erected or lowered over the end with no load.
- Crane on firm and level surface.

Working Areas

- These lines determine the limiting position of any load for operation within working areas indicated.



Caution: This material is for reference only. Operator must refer to in-cab capacity plate to determine allowable machine lifting capacities and operating procedures.

LS-238H Lift Crane Capacities

Boom Length (ft.)	Load Radius (ft.)	Boom Angle (deg.)	Capacity (thousands of lbs.) 360 Degree Rotation					Capacity (thousands of lbs.) Over End - Blocked		Load Radius (ft.)	
			"ABC" + 0 cwt.	"AB" + 0 cwt.	"A" + 0 cwt.	No cwt.	"ABC + 20,000 lb. cwt.	"ABC" + 0 cwt.	"ABC + 20,000 lb. cwt.		
35' ^⓪ (10.67m) Hammerhead Tip	10	82.0						300.0 *			
	15	72.9						225.9 *			
	20	63.2						154.4			
	25	52.3						108.7			
	30	39.1						83.1			
	35	17.6						54.7 *			
50' (15.24m)	12	79.6	250.0 *	250.0 *	235.3 *	181.5	250.0 *	250.0 *	250.0 *	250.0 *	12
	13	78.4	250.0 *	236.9 *	212.2	148.4	250.0 *	250.0 *	250.0 *	250.0 *	13
	14	77.2	238.0 *	221.1 *	179.5	125.3	238.0 *	238.0 *	238.0 *	238.0 *	14
	15	76.1	227.1 *	197.4	155.3	108.3	227.1 *	227.1 *	227.1 *	227.1 *	15
	16	74.9	215.3 *	174.0	136.8	95.3	215.3 *	215.3 *	215.3 *	215.3 *	16
	17	73.7	201.1	155.5	122.1	84.9	203.3 *	203.3 *	203.3 *	203.3 *	17
	18	72.5	181.8	140.4	110.2	76.5	192.5 *	192.5 *	192.5 *	192.5 *	18
	19	71.3	165.8	128.0	100.4	69.5	175.3	182.7 *	182.7 *	182.7 *	19
	20	70.1	152.3	117.5	92.1	63.7	161.0	173.9 *	173.9 *	173.9 *	20
	25	63.8	107.8	82.9	64.6	44.3	114.1	140.0 *	140.0 *	140.0 *	25
	30	57.3	82.9	63.5	49.3	33.5	87.8	110.0	116.4 *	116.4 *	30
35	50.1	67.1	51.1	39.5	26.6	71.1	87.3	93.1	93.1	35	
40	42.2	56.0	42.5	32.7	21.7	59.4	72.1	76.9	76.9	40	
50	19.8	41.6	31.3	23.8	15.4	44.2	46.8 *	46.8 *	46.8 *	50	
60' (18.29m)	14	79.4	234.7 *	220.6 *	180.2	126.1	234.7 *	234.7 *	234.7 *	234.7 *	14
	15	78.4	226.5 *	198.1	156.0	109.0	226.5 *	226.5 *	226.5 *	226.5 *	15
	16	77.4	214.9 *	174.6	137.4	95.8	214.9 *	214.9 *	214.9 *	214.9 *	16
	17	76.5	201.7	156.0	122.7	85.4	202.9 *	202.9 *	202.9 *	202.9 *	17
	18	75.5	182.3	140.9	110.7	77.0	192.2 *	192.2 *	192.2 *	192.2 *	18
	19	74.5	166.2	128.4	100.8	70.0	175.7	182.5 *	182.5 *	182.5 *	19
	20	73.5	152.7	117.9	92.5	64.1	161.4	173.7 *	173.7 *	173.7 *	20
	25	68.4	108.1	83.1	64.9	44.6	114.4	139.6 *	139.6 *	139.6 *	25
	30	63.2	83.2	63.8	49.6	33.7	88.1	110.3	116.4 *	116.4 *	30
	35	57.7	67.3	51.4	39.8	26.8	71.3	87.6	93.3	93.3	35
	40	51.9	56.2	42.8	32.9	21.9	59.6	72.3	77.2	77.2	40
50	38.4	41.9	31.6	24.0	15.6	44.5	53.2	56.8	56.8	50	
60	18.1	32.9	24.5	18.4	11.6	35.0	38.5 *	38.5 *	38.5 *	60	
70' (21.34m)	16	79.3	211.2 *	176.0	138.8	97.2	211.2 *	211.2 *	211.2 *	211.2 *	16
	17	78.4	202.9	157.3	123.9	86.7	203.0 *	203.0 *	203.0 *	203.0 *	17
	18	77.6	183.4	142.0	111.8	78.1	192.3 *	192.3 *	192.3 *	192.3 *	18
	19	76.7	167.2	129.4	101.8	71.0	176.8	182.6 *	182.6 *	182.6 *	19
	20	75.9	153.6	118.8	93.4	65.0	162.4	173.8 *	173.8 *	173.8 *	20
	25	71.6	108.8	83.8	65.6	45.3	115.1	139.8 *	139.8 *	139.8 *	25
	30	67.3	83.7	64.3	50.1	34.3	88.6	111.0	116.6 *	116.6 *	30
	35	62.8	67.7	51.8	40.2	27.2	71.7	88.1	93.9	93.9	35
	40	58.0	56.6	43.2	33.3	22.3	60.0	72.8	77.6	77.6	40
	50	47.8	42.2	31.9	24.4	16.0	44.8	53.5	57.1	57.1	50
	60	35.4	33.2	24.8	18.8	11.9	35.3	41.9	44.8	44.8	60
70	16.7	27.0	19.9	14.8	9.1	28.7	34.0	36.4	36.4	70	
80' (24.38m)	17	79.9	190.4 *	157.5	124.1	86.9	190.4 *	190.4 *	190.4 *	190.4 *	17
	18	79.2	183.6	142.2	112.0	78.3	188.0 *	188.0 *	188.0 *	188.0 *	18
	19	78.4	167.4	129.6	102.0	71.2	176.9	182.0 *	182.0 *	182.0 *	19
	20	77.7	153.8	119.0	93.5	65.2	162.5	173.3 *	173.3 *	173.3 *	20
	25	74.0	108.8	83.9	65.7	45.4	115.1	139.5 *	139.5 *	139.5 *	25
	30	70.2	83.7	64.3	50.1	34.3	88.6	111.1	116.3 *	116.3 *	30
	35	66.4	67.7	51.8	40.2	27.2	71.7	88.2	93.9	93.9	35
	40	62.4	56.6	43.1	33.3	22.3	60.0	72.8	77.6	77.6	40
	50	54.0	42.2	31.9	24.3	15.9	44.8	53.5	57.2	57.2	50
	60	44.5	33.2	24.8	18.7	11.9	35.3	41.9	44.8	44.8	60
	70	33.1	27.0	20.0	14.9	9.2	28.8	34.1	36.5	36.5	70
80	15.6	22.5	16.4	12.0	7.1	24.0	28.4	30.4	30.4	80	
90' (27.43m)	19	79.7	167.5	129.7	102.1	71.2	170.7 *	170.7 *	170.7 *	170.7 *	19
	20	79.1	153.8	119.0	93.6	65.2	162.6	168.5 *	168.5 *	168.5 *	20
	25	75.8	108.8	83.9	65.7	45.4	115.1	139.0 *	139.0 *	139.0 *	25
	30	72.5	83.7	64.3	50.1	34.3	88.6	111.1	116.0 *	116.0 *	30
	35	69.1	67.7	51.8	40.1	27.2	71.7	88.2	93.9	93.9	35
	40	65.7	56.5	43.1	33.2	22.2	59.9	72.8	77.6	77.6	40
	50	58.5	42.1	31.8	24.3	15.8	44.7	53.5	57.1	57.1	50
	60	50.7	33.1	24.8	18.7	11.9	35.2	41.8	44.7	44.7	60
	70	41.8	27.0	20.0	14.8	9.1	28.7	34.0	36.4	36.4	70
	80	31.1	22.5	16.4	12.0	7.1	24.0	28.4	30.4	30.4	80
90	14.7	19.0	13.7	9.8	5.5	20.4	24.1	25.9	25.9	90	

⓪ Requires hammerhead tip.

Boom Length (ft.)	Load Radius (ft.)	Boom Angle (deg.)	Capacity (thousands of lbs.) 360 Degree Rotation					Capacity (thousands of lbs.) Over End - Blocked		Load Radius (ft.)
			"ABC" + 0	"AB" + 0	"A" + 0	No	"ABC +	"ABC" + 0	"ABC +	
			ctwt.	ctwt.	ctwt.	ctwt.	20,000 lb. ctwt.	ctwt.	20,000 lb. ctwt.	
100' (30.48m)	21	79.6	142.2	110.0	86.4	60.1	150.3	154.0 *	154.0 *	21
	25	77.3	108.8	83.9	65.7	45.3	115.1	138.5 *	138.5 *	25
	30	74.3	83.6	64.2	50.0	34.2	88.5	111.1	115.6 *	30
	35	71.3	67.6	51.7	40.0	27.1	71.6	88.1	93.9	35
	40	68.3	56.4	43.0	33.1	22.1	59.8	72.7	77.5	40
	50	61.9	42.0	31.7	24.1	15.7	44.6	53.4	57.0	50
	60	55.2	33.0	24.6	18.5	11.7	35.1	41.7	44.6	60
	70	47.9	26.9	19.8	14.7	9.0	28.6	33.9	36.3	70
	80	39.6	22.4	16.3	11.9	7.0	23.9	28.3	30.4	80
	90	29.5	19.0	13.7	9.8	5.4	20.3	24.0	25.9	90
100	14.0	14.0	16.2	11.5	8.0	4.2	17.4	20.7	22.3	100
110' (33.53m)	23	79.5	123.3	95.2	74.7	51.7	130.4	139.7 *	139.7 *	23
	25	78.4	108.7	83.8	65.6	45.3	115.0	136.2 *	136.2 *	25
	30	75.8	83.5	64.1	49.9	34.1	88.4	111.0	115.1 *	30
	35	73.1	67.4	51.5	39.9	27.0	71.5	88.0	93.8	35
	40	70.3	56.3	42.8	33.0	22.0	59.7	72.6	77.4	40
	50	64.7	41.8	31.5	24.0	15.6	44.4	53.3	56.9	50
	60	58.8	32.8	24.5	18.4	11.6	34.9	41.6	44.5	60
	70	52.4	26.7	19.7	14.6	8.8	28.5	33.8	36.2	70
	80	45.5	22.2	16.2	11.8	6.8	23.8	28.2	30.2	80
	90	37.7	18.9	13.5	9.7	5.3	20.2	23.9	25.7	90
	100	28.1	16.2	11.4	8.0	4.1	17.4	20.6	22.2	100
110	13.3	13.9	9.7	6.5	3.0	15.0	17.9	19.3	110	
120' (36.58m)	24	79.9	115.5	89.1	69.8	48.2	122.2	128.0 *	128.0 *	24
	25	79.4	108.7	83.7	65.5	45.2	114.9	126.8 *	126.8 *	25
	30	77.0	83.4	64.0	49.8	34.0	88.3	111.0	112.5 *	30
	35	74.5	67.3	51.4	39.8	26.8	71.3	87.9	93.7	35
	40	72.0	56.1	42.7	32.8	21.9	59.5	72.5	77.3	40
	50	66.9	41.7	31.4	23.8	15.4	44.3	53.1	56.7	50
	60	61.6	32.7	24.3	18.2	11.4	34.8	41.4	44.3	60
	70	56.0	26.5	19.5	14.4	8.7	28.3	33.6	36.0	70
	80	50.1	22.1	16.0	11.6	6.7	23.6	28.0	30.1	80
	90	43.5	18.7	13.4	9.5	5.2	20.0	23.8	25.6	90
	100	36.0	16.0	11.3	7.8	3.9	17.2	20.5	22.1	100
	110	26.9	13.8	9.6	6.4	2.9	14.9	17.8	19.3	110
120	12.7	12.0	8.1	5.3	2.1	13.0	15.6	16.9	120	
130' (39.62m)	26	79.8	102.4	78.8	61.6	42.4	108.4	116.7 *	116.7 *	26
	30	78.0	83.3	63.9	49.7	33.9	88.2	108.7 *	108.7 *	30
	35	75.7	67.2	51.3	39.7	26.7	71.2	87.8	93.6	35
	40	73.4	56.0	42.5	32.7	21.7	59.4	72.4	77.2	40
	50	68.8	41.5	31.2	23.7	15.2	44.1	53.0	56.6	50
	60	64.0	32.5	24.1	18.0	11.2	34.6	41.3	44.2	60
	70	59.0	26.3	19.3	14.2	8.5	28.1	33.4	35.9	70
	80	53.7	21.9	15.8	11.4	6.5	23.4	27.8	29.9	80
	90	48.0	18.5	13.2	9.3	5.0	19.8	23.6	25.4	90
	100	41.7	15.8	11.1	7.6	3.8	17.0	20.3	21.9	100
	110	34.6	13.7	9.4	6.3	2.8	14.8	17.6	19.1	110
	120	25.8	11.9	8.0	5.1	2.1	12.9	15.5	16.8	120
	130	12.2	10.3	6.7	4.1	1.5	11.2	13.6	14.8	130
140' (42.76m)	28	79.7	91.8	70.5	55.0	37.6	97.2	105.9 *	105.9 *	28
	30	78.9	83.2	63.8	49.6	33.7	88.1	104.3 *	104.3 *	30
	35	76.8	67.0	51.1	39.5	26.5	71.0	87.7	90.8 *	35
	40	74.7	55.8	42.4	32.5	21.5	59.2	72.2	77.1	40
	50	70.4	41.3	31.0	23.5	15.1	43.9	52.8	56.4	50
	60	66.0	32.3	23.9	17.8	11.0	34.4	41.1	44.0	60
	70	61.4	26.1	19.1	14.0	8.3	27.9	33.3	35.7	70
	80	56.6	21.7	15.6	11.2	6.3	23.2	27.6	29.7	80
	90	51.6	18.3	13.0	9.1	4.8	19.6	23.4	25.2	90
	100	46.1	15.6	10.9	7.4	3.6	16.8	20.1	21.7	100
	110	40.1	13.5	9.2	6.1	2.6	14.6	17.5	18.9	110
	120	33.3	11.7	7.8	5.0	2.0	12.7	15.3	16.6	120
	130	24.8	10.2	6.6	4.0	1.5	11.1	13.4	14.7	130
	140	11.8	8.9	5.6	3.1	1.0	9.7	11.9	13.0	140

LS-238H Lift Crane Capacities

Boom Length (ft.)	Load Radius (ft.)	Boom Angle (deg.)	Capacity (thousands of lbs.) 360 Degree Rotation					Capacity (thousands of lbs.) Over End - Blocked			Load Radius (ft.)
			"ABC" + 0	"AB" + 0	"A" + 0	No	"ABC +	"ABC" + 0	"ABC +		
			ctwt.	ctwt.	ctwt.	ctwt.	20,000 lb. ctwt.	ctwt.	20,000 lb. ctwt.		
150' (45.72m)	30	79.6	83.0	63.6	49.4	33.6	87.9	97.0 *	97.0 *	30	
	35	77.7	66.9	51.0	39.3	26.4	70.9	87.6	88.7 *	35	
	40	75.7	55.6	42.2	32.3	21.4	59.0	72.1	76.9	40	
	50	71.7	41.1	30.8	23.3	14.9	43.7	52.6	56.3	50	
	60	67.6	32.1	23.7	17.6	10.8	34.2	40.9	43.8	60	
	70	63.4	25.9	18.9	13.8	8.1	27.7	33.1	35.5	70	
	80	59.1	21.5	15.4	11.0	6.1	23.0	27.4	29.5	80	
	90	54.5	18.1	12.8	8.9	4.6	19.4	23.2	25.0	90	
	100	49.7	15.4	10.7	7.2	3.4	16.6	19.9	21.5	100	
	110	44.5	13.3	9.0	5.9	2.4	14.4	17.3	18.7	110	
	120	38.7	11.5	7.6	4.7		12.5	15.1	16.4	120	
	130	32.1	10.0	6.4	3.8		10.9	13.3	14.5	130	
	140	24.0	8.7	5.4	3.0		9.5	11.7	12.8	140	
	150	11.4	7.6	4.5	2.2		8.3	10.3	11.4	150	
	160' (48.77m)	31	79.9	79.1	60.5	46.9	31.8	83.8	88.6 *	88.6 *	31
35		78.4	66.7	50.8	39.2	26.2	70.7	86.0 *	86.0 *	35	
40		76.6	55.5	42.0	32.2	21.2	58.9	72.0	75.7 *	40	
50		72.9	40.9	30.6	23.1	14.7	43.5	52.5	56.1	50	
60		69.1	31.9	23.5	17.4	10.6	34.0	40.7	43.6	60	
70		65.2	25.7	18.7	13.6	7.9	27.5	32.9	35.3	70	
80		61.2	21.3	15.2	10.8	5.9	22.8	27.2	29.3	80	
90		57.0	17.9	12.6	8.7	4.3	19.2	23.0	24.8	90	
100		52.7	15.2	10.5	7.0	3.1	16.4	19.7	21.3	100	
110		48.0	13.1	8.8	5.7	2.2	14.1	17.1	18.5	110	
120		43.0	11.3	7.4	4.5		12.3	14.9	16.2	120	
130		37.4	9.8	6.2	3.6		10.7	13.1	14.3	130	
140		31.1	8.5	5.2	2.8		9.3	11.5	12.6	140	
150		23.2	7.4	4.3	2.1		8.2	10.2	11.2	150	
160		11.0	6.4	3.5			7.1	9.0	9.9	160	
170' (51.82m)	33	79.8	72.3	55.1	42.6		76.6	81.3 *	81.3 *	33	
	35	79.1	66.5	50.6	39.0		70.5	80.1 *	80.1 *	35	
	40	77.4	55.3	41.8	32.0		58.7	71.8	73.4 *	40	
	50	73.9	40.7	30.4	22.9		43.3	52.3	55.9	50	
	60	70.4	31.7	23.3	17.2		33.8	40.5	43.4	60	
	70	66.8	25.5	18.5	13.4		27.3	32.7	35.1	70	
	80	63.0	21.0	15.0	10.6		22.6	27.0	29.1	80	
	90	59.2	17.6	12.3	8.4		19.0	22.8	24.6	90	
	100	55.2	15.0	10.2	6.8		16.2	19.5	21.1	100	
	110	51.0	12.8	8.5	5.4		13.9	16.8	18.3	110	
	120	46.5	11.1	7.2	4.3		12.0	14.7	16.0	120	
	130	41.6	9.6	6.0	3.4		10.5	12.8	14.1	130	
	140	36.3	8.3	5.0	2.6		9.1	11.3	12.4	140	
	150	30.1	7.2	4.1			8.0	10.0	11.0	150	
	160	22.5	6.2	3.3			6.9	8.8	9.8	160	
170	10.7	5.3	2.6			6.0	7.7	8.5 *	170		
180' (54.86m)	35	79.7	66.4	50.4	38.8		70.4	71.6 *	71.6 *	35	
	40	78.1	55.1	41.6	31.8		58.5	71.1 *	71.1 *	40	
	50	74.8	40.5	30.2	22.7		43.1	52.1	55.7	50	
	60	71.5	31.4	23.1	17.0		33.6	40.3	43.2	60	
	70	68.1	25.3	18.3	13.1		27.0	32.4	34.9	70	
	80	64.7	20.8	14.8	10.3		22.3	26.8	28.9	80	
	90	61.1	17.4	12.1	8.2		18.8	22.6	24.4	90	
	100	57.4	14.7	10.0	6.5		15.9	19.3	20.9	100	
	110	53.5	12.6	8.3	5.2		13.7	16.6	18.1	110	
	120	49.4	10.8	6.9	4.1		11.8	14.4	15.8	120	
	130	45.1	9.3	5.8	3.1		10.2	12.6	13.8	130	
	140	40.4	8.1	4.8	2.3		8.9	11.1	12.2	140	
	150	35.2	7.0	3.9			7.7	9.8	10.8	150	
	160	29.3	6.0	3.1			6.7	8.6	9.6	160	
	170	21.9	5.2	2.5			5.8	7.6	8.5	170	
180	10.4	4.4				5.0	6.6	7.1 *	180		

Boom Length (ft.)	Load Radius (ft.)	Boom Angle (deg.)	Capacity (thousands of lbs.) 360 Degree Rotation					Capacity (thousands of lbs.) Over End - Blocked			Load Radius (ft.)
			"ABC" + 0	"AB" + 0	"A" + 0	No	"ABC +	"ABC" + 0	"ABC +		
			ctwt.	ctwt.	ctwt.	ctwt.	20,000 lb. ctwt.	ctwt.	20,000 lb. ctwt.		
190' (57.91m)	36	80.0	62.7 *	48.3	37.0		62.7 *	62.7 *	62.7 *	36	
	40	78.8	54.9	41.4	31.6		58.3	62.4 *	62.4 *	40	
	50	75.7	40.3	30.0	22.5		42.9	51.9	55.5	50	
	60	72.5	31.2	22.9	16.8		33.3	40.1	43.0	60	
	70	69.3	25.1	18.0	12.9		26.8	32.2	34.6	70	
	80	66.1	20.6	14.5	10.1		22.1	26.6	28.7	80	
	90	62.7	17.2	11.9	8.0		18.5	22.3	24.2	90	
	100	59.3	14.5	9.8	6.3		15.7	19.0	20.6	100	
	110	55.7	12.4	8.1	5.0		13.4	16.4	17.8	110	
	120	52.0	10.6	6.7	3.8		11.6	14.2	15.5	120	
	130	48.0	9.1	5.5	2.9		10.0	12.4	13.6	130	
	140	43.8	7.8	4.5	2.1		8.7	10.9	12.0	140	
	150	39.3	6.7	3.7			7.5	9.5	10.6	150	
	160	34.3	5.8	2.9			6.5	8.4	9.3	160	
	170	28.5	4.9	2.2			5.6	7.4	8.3	170	
	180	21.3	4.2				4.8	6.4	7.3	180	
190	10.1	3.5				4.1	5.6	5.9 *	190		
200' (60.96m)	38	79.9	55.4 *	44.4			55.4 *	55.4 *	55.4 *	38	
	40	79.3	54.7	41.2			55.4 *	55.4 *	55.4 *	40	
	50	76.4	40.1	29.8			42.7	51.3 *	51.3 *	50	
	60	73.4	31.0	22.7			33.1	39.9	42.8	60	
	70	70.4	24.8	17.8			26.6	32.0	34.4	70	
	80	67.3	20.3	14.3			21.9	26.4	28.4	80	
	90	64.2	16.9	11.6			18.3	22.1	23.9	90	
	100	61.0	14.3	9.5			15.5	18.8	20.4	100	
	110	57.6	12.1	7.8			13.2	16.1	17.6	110	
	120	54.2	10.3	6.4			11.3	14.0	15.3	120	
	130	50.6	8.9	5.3			9.8	12.2	13.4	130	
	140	46.7	7.6	4.3			8.4	10.6	11.7	140	
	150	42.7	6.5	3.4			7.3	9.3	10.3	150	
	160	38.3	5.5	2.7			6.3	8.1	9.1	160	
	170	33.4	4.7	2.0			5.4	7.1	8.0	170	
	180	27.7	4.0				4.6	6.2	7.1	180	
190	20.7	3.3				3.9	5.4	6.2	190		
200	9.9	2.6				3.2	4.7	4.7 *	200		
210' (64.01m)	40	79.8	49.3 *	41.0			49.3 *	49.3 *	49.3 *	40	
	50	77.1	39.9	29.6			42.5	45.6 *	45.6 *	50	
	60	74.2	30.8	22.4			32.9	39.7	40.4 *	60	
	70	71.4	24.6	17.6			26.4	31.8	34.2	70	
	80	68.5	20.1	14.1			21.6	26.1	28.2	80	
	90	65.5	16.7	11.4			18.0	21.9	23.7	90	
	100	62.5	14.0	9.3			15.2	18.6	20.2	100	
	110	59.4	11.9	7.6			13.0	15.9	17.4	110	
	120	56.1	10.1	6.2			11.1	13.7	15.1	120	
	130	52.8	8.6	5.0			9.5	11.9	13.1	130	
	140	49.3	7.3	4.0			8.2	10.4	11.5	140	
	150	45.6	6.3	3.2			7.0	9.1	10.1	150	
	160	41.6	5.3	2.4			6.0	7.9	8.9	160	
	170	37.3	4.5				5.1	6.9	7.8	170	
	180	32.5	3.7				4.4	6.0	6.8	180	
	190	27.0	3.1				3.7	5.2	6.0	190	
200	20.2	2.4				3.0	4.5	5.2	200		
210	9.6					2.4	3.6 *	3.6 *	210		

LS-238H Lift Crane Capacities

Boom Length (ft.)	Load Radius (ft.)	Boom Angle (deg.)	Capacity (thousands of lbs.) 360 Degree Rotation				Capacity (thousands of lbs.) Over End - Blocked			Load Radius (ft.)
			"ABC" + 0	"AB" + 0	"A" + 0	No	"ABC +	"ABC" + 0	"ABC +	
			ctwt.	ctwt.	ctwt.	ctwt.	20,000 lb. ctwt.	ctwt.	20,000 lb. ctwt.	
220' (67.06m)	42	79.8	43.3 *	38.0			43.3 *	43.3 *	43.3 *	42
	50	77.7	39.6	29.3			40.3 *	40.3 *	40.3 *	50
	60	75.0	30.5	22.2			32.7	36.3 *	36.3 *	60
	70	72.3	24.4	17.3			26.1	31.6	32.2 *	70
	80	69.5	19.9	13.8			21.4	25.9	28.0	80
	90	66.7	16.5	11.1			17.8	21.6	23.5	90
	100	63.8	13.8	9.0			15.0	18.3	19.9	100
	110	60.9	11.6	7.3			12.7	15.7	17.1	110
	120	57.9	9.9	6.0			10.8	13.5	14.8	120
	130	54.7	8.4	4.8			9.3	11.7	12.9	130
	140	51.5	7.1	3.8			7.9	10.1	11.2	140
	150	48.1	6.0	2.9			6.8	8.8	9.8	150
	160	44.5	5.1	2.2			5.8	7.7	8.6	160
	170	40.6	4.2				4.9	6.6	7.6	170
	180	36.4	3.5				4.1	5.7	6.6	180
	190	31.8	2.8				3.4	4.9	5.8	190
	200	26.4	2.2				2.8	4.2	5.0	200
210	19.8					2.2	3.6	4.1 *	210	
220	9.4						2.6 *	2.6 *	220	
230' (70.10m)	43	80.0	38.7 *				38.7 *	38.7 *	38.7 *	43
	50	78.2	36.1 *				36.1 *	36.1 *	36.1 *	50
	60	75.6	30.3				32.4	32.5 *	32.5 *	60
	70	73.1	24.1				25.9	28.8 *	28.8 *	70
	80	70.4	19.6				21.1	25.7	25.7 *	80
	90	67.8	16.2				17.6	21.4	22.5 *	90
	100	65.0	13.5				14.7	18.1	19.7	100
	110	62.3	11.4				12.5	15.4	16.9	110
	120	59.4	9.6				10.6	13.2	14.6	120
	130	56.5	8.1				9.0	11.4	12.6	130
	140	53.4	6.8				7.7	9.9	11.0	140
	150	50.3	5.8				6.5	8.6	9.6	150
	160	46.9	4.8				5.5	7.4	8.4	160
	170	43.4	4.0				4.6	6.4	7.3	170
	180	39.7	3.2				3.9	5.5	6.4	180
	190	35.6	2.6				3.2	4.7	5.5 *	190
	200	31.0	2.0				2.5	4.0	4.0 *	200
210	25.8					2.0	3.3	2.6 *	210	
220	19.3						2.7		220	
230	9.2								230	
240' (73.15m)	45	79.9	34.0 *				34.0 *	34.0 *	34.0 *	45
	50	78.7	32.3 *				32.3 *	32.3 *	32.3 *	50
	60	76.2	29.1 *				29.1 *	29.1 *	29.1 *	60
	70	73.8	23.9				25.6	25.8 *	25.8 *	70
	80	71.3	19.4				20.9	22.4 *	22.4 *	80
	90	68.7	16.0				17.3	20.0 *	20.0 *	90
	100	66.1	13.3				14.5	17.8	17.9 *	100
	110	63.5	11.1				12.2	15.2	16.1 *	110
	120	60.8	9.3				10.3	13.0	14.3	120
	130	58.0	7.9				8.8	11.2	12.4 *	130
	140	55.2	6.6				7.4	9.6	10.6 *	140
	150	52.2	5.5				6.3	8.3	9.1 *	150
	160	49.1	4.6				5.3	7.2	7.7 *	160
	170	45.9	3.7				4.4	6.1	6.5 *	170
	180	42.5	3.0				3.6	5.3	5.5 *	180
	190	38.8	2.3				2.9	4.5	4.0 *	190
	200	34.8					2.3	3.6 *	2.6 *	200
210	30.4						2.8 *		210	
220	25.3						2.1 *		220	
230	18.9								230	
240	9.0								240	

LS-238H Lift Crane Capacity Notes

General:

1. Rated lifting capacities in pounds as shown on lift charts pertain to the crane as originally manufactured and normally equipped. Modifications to the crane or use of optional equipment other than that specified can result in a reduction of capacity.
2. Construction equipment can be dangerous if improperly operated or maintained. Operation and maintenance of the crane must be in compliance with the information in the Operator's, Parts and Safety Manuals supplied with the crane. If these manuals are missing, order replacements through the distributor.
3. The operator and other personnel associated with the crane shall read and fully understand the latest applicable American National Standards Institute (ANSI) safety standards for cranes.
4. The maximum allowable lifting capacities are based on crane standing level on firm supporting surface.
5. All capacities listed are in compliance with ASME/ANSI B30.5b-1994, SAE J987-April 1991, and SAE J765-October 1990.

Set-Up:

1. The crane shall be leveled on a firm supporting surface. Depending on the nature of the supporting surface, it may be necessary to have structural supports under the crawler side frames to spread the load to a larger bearing surface.
2. For required parts of line, see wire rope strength and winch performance tables in Crane Rating Manual.

Lift Crane Operation:

1. Capacities shown are in pounds and are not more than 75% of the tipping loads with the crane standing level on firm supporting surface. A deduction must be made from these capacities for weight of hook block, hook, sling, grapple, load weighing device, etc. When using main hook while jib is attached, reduce capacities by values shown in Crane Rating Manual. See Operator's Manual for all limitations when raising or lowering attachment.
2. The capacities marked with an asterisk (*) are based on factors other than those which would cause a tipping condition.
3. For recommended reeving, parts of line, wire rope type and wire rope inspection, see wire rope strength chart, Operator's Manual and Parts Manual.
4. Load ratings are based on freely suspended loads and make no allowances for such factors as the effect of the wind, ground conditions, and operating speeds. The operator shall therefore reduce load ratings in order to take these conditions into account.
5. The 26' (7.92 m) live mast must be used for all capacities listed.
6. The least stable rated condition is over the side.
7. Booms must be erected and lowered over the end.
8. Main boom length must not exceed 240' (73.15 m).
9. Do not operate at radii and boom lengths where the Crane Rating Manual lists no capacity. Do not use longer booms or jibs than those listed in the Crane Rating Manual. Any of the above can cause a tipping condition, or boom and jib failure.
10. These capacities apply only to the crane as originally manufactured and normally equipped by Link-Belt Construction Equipment Company.

For Over End Capacities Only:

1. These capacities can be lifted over either end with crane standing level on firm supporting surface with adequate blocking placed under the tread member sprockets/idlers at the lift off end, to prevent rocking.
2. Do not travel with a load.

LS-238H Working Range

Link-Belt Construction Equipment Company Lexington, Kentucky

A unit of Sumitomo Construction Machinery Co., Ltd.

© Link-Belt is a registered trademark. Copyright 1996. All rights reserved. We are constantly improving our products and therefore reserve the right to change designs and specifications.